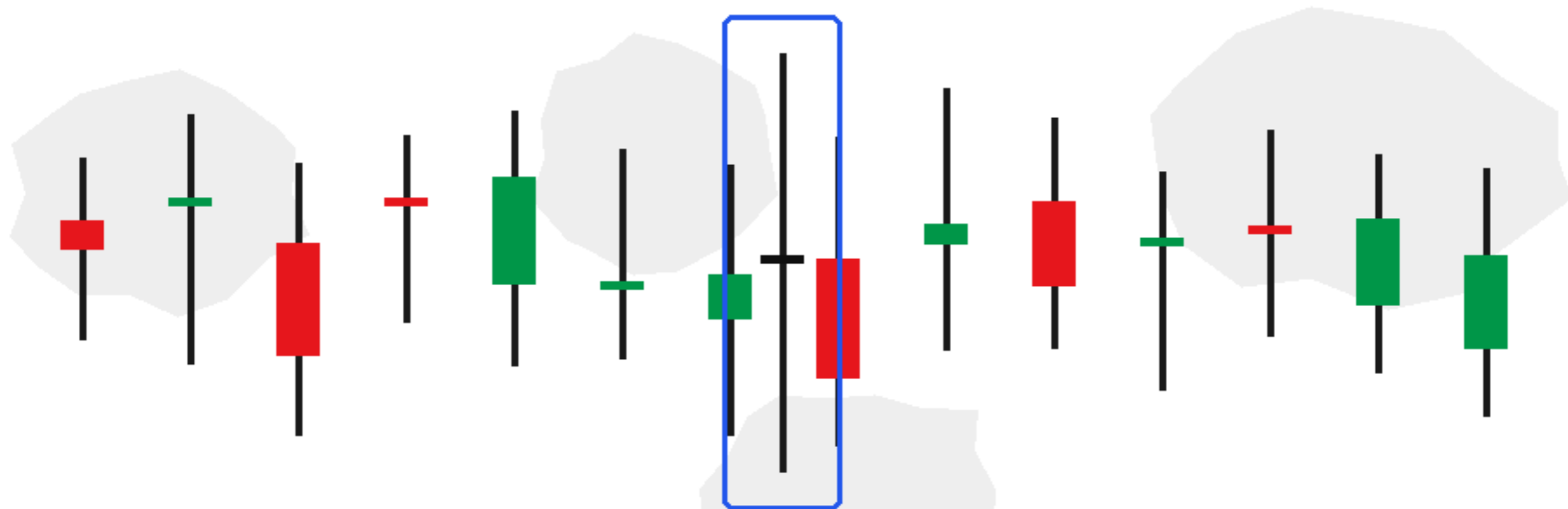


13 Single Candlestick Patterns

Visual PDF Guide

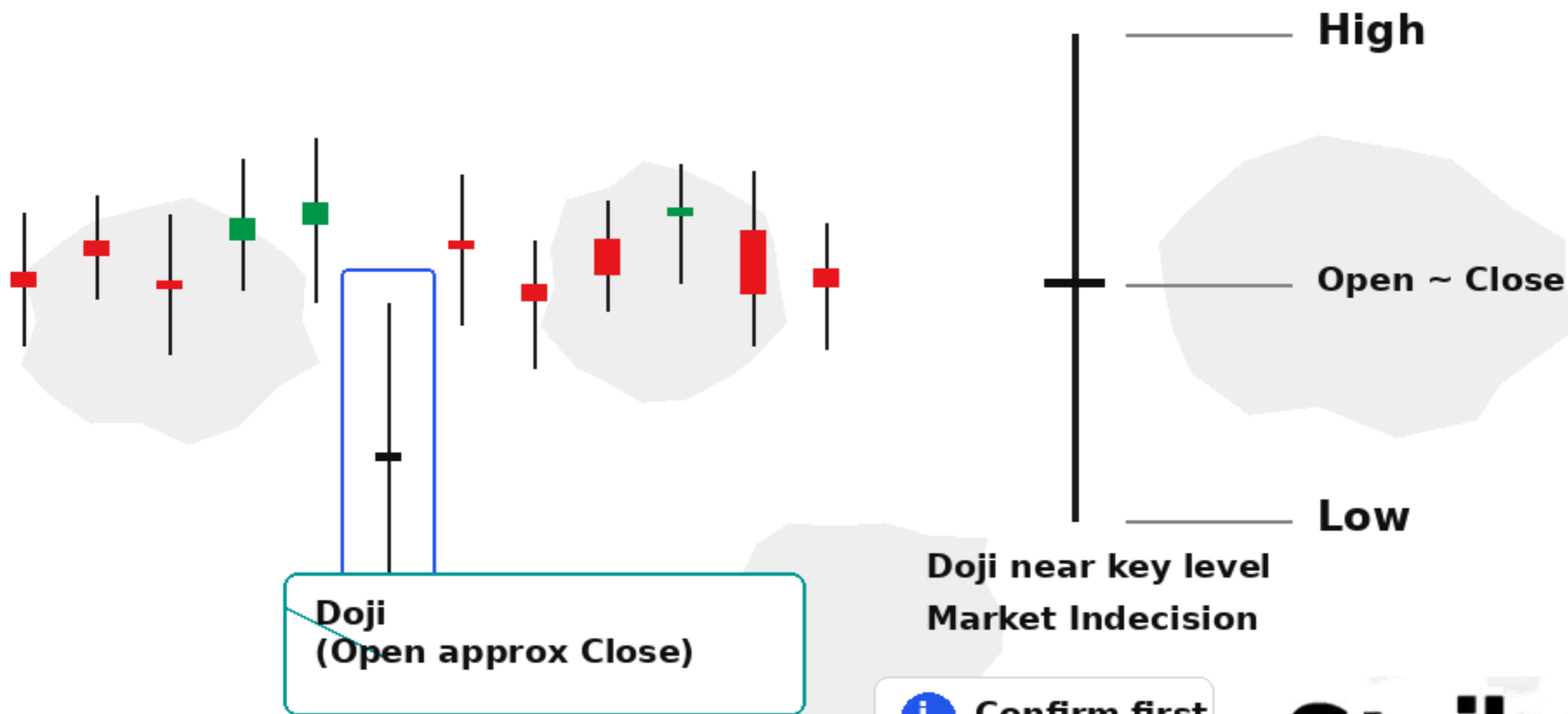


Shape + Trend + Location + Confirmation

Past performance is not indicative of future results.
Trade responsibly.

Strike

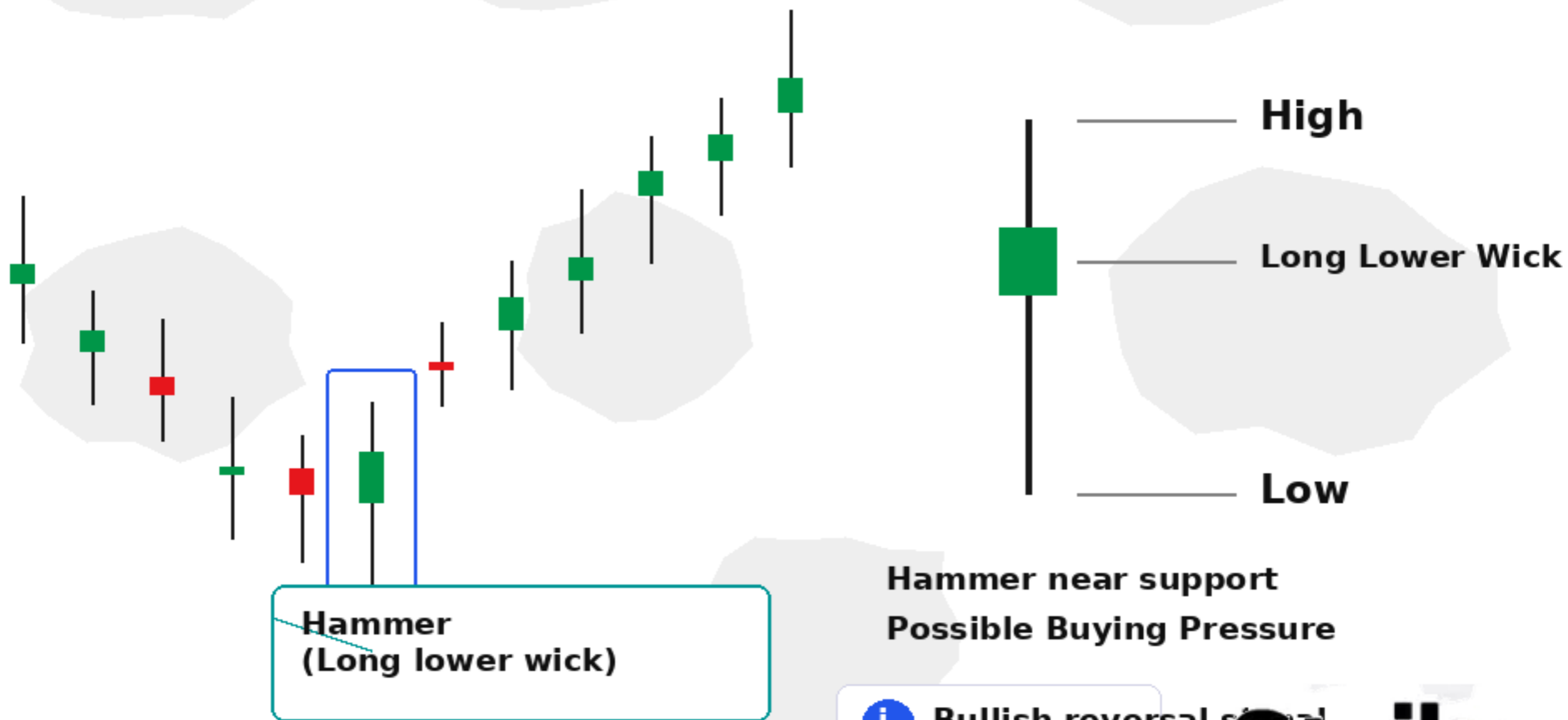
Doji Candlestick Pattern



Past performance is not indicative of future results.
Trade responsibly.

Strike

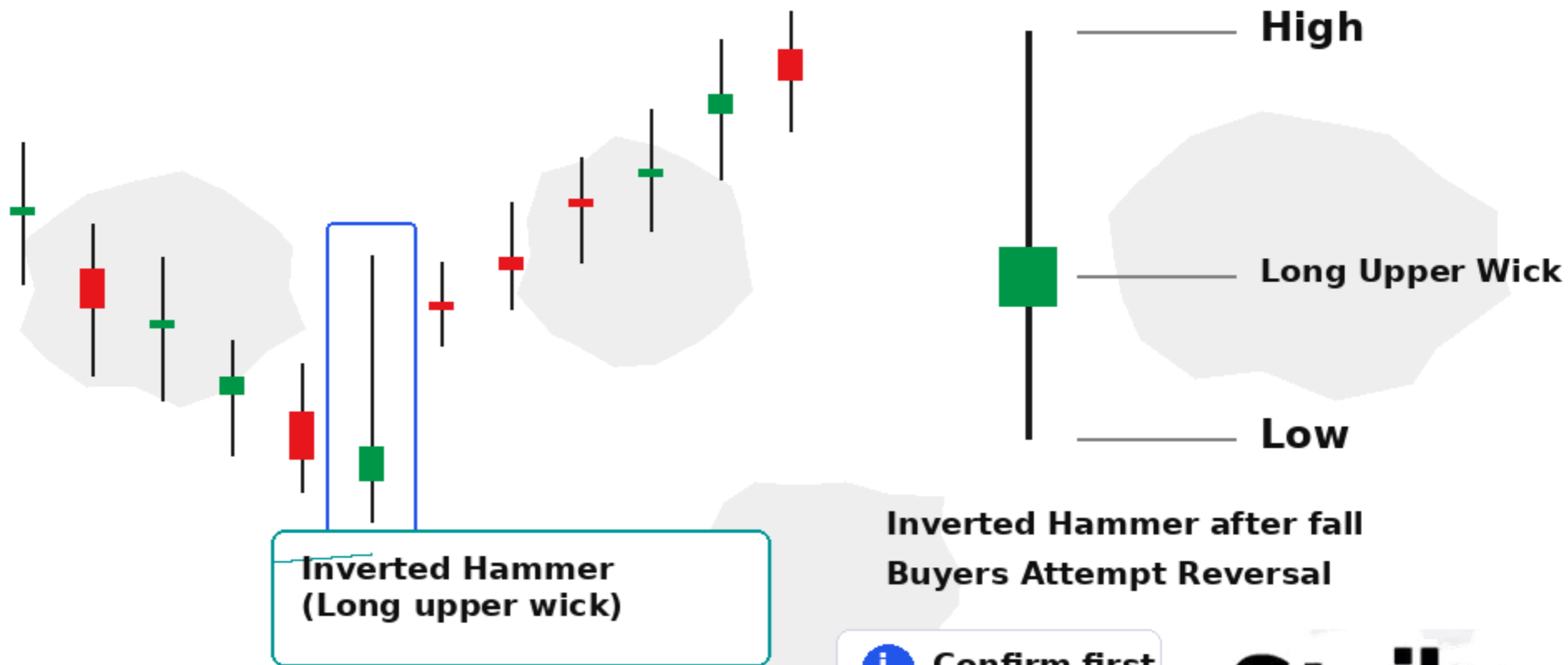
Hammer Candlestick Pattern



Past performance is not indicative of future results.
Trade responsibly.

Strike

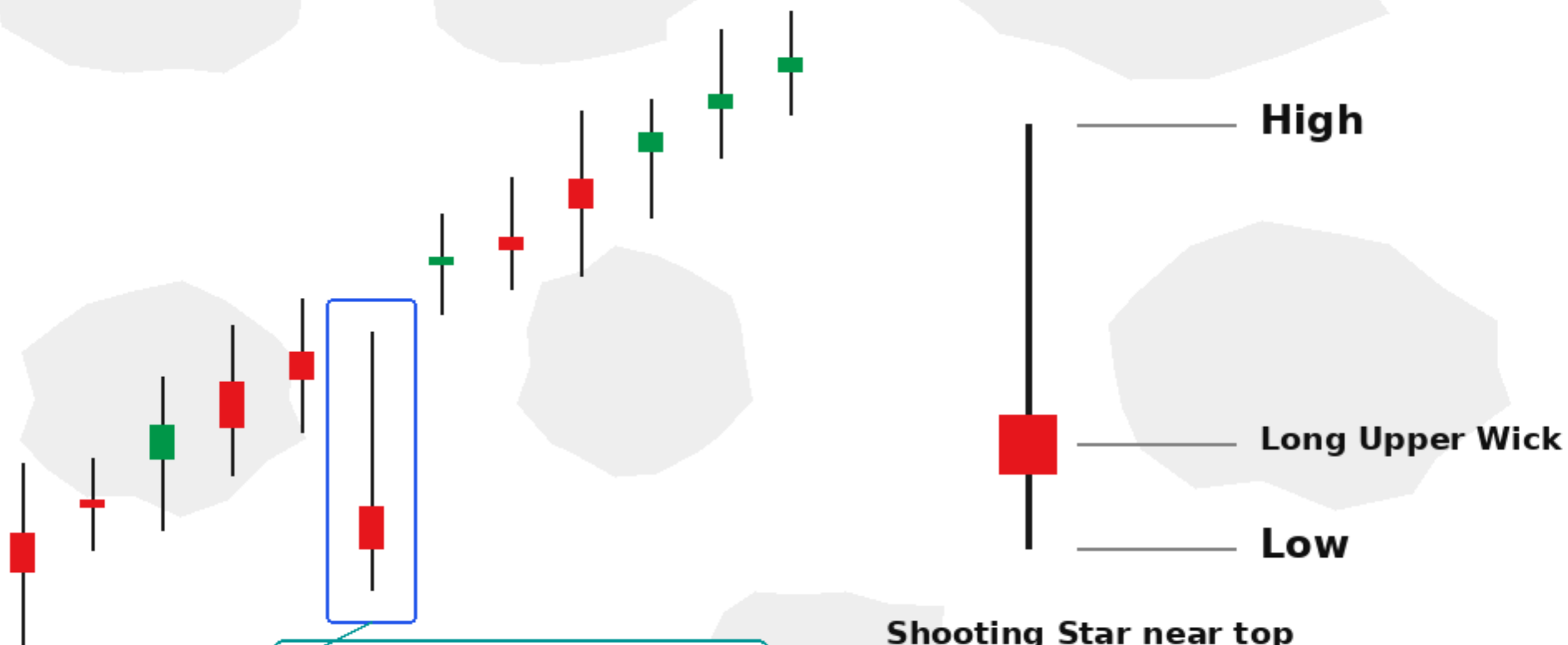
Inverted Hammer Candlestick Pattern



Past performance is not indicative of future results.
Trade responsibly.

Strike

Shooting Star Candlestick Pattern



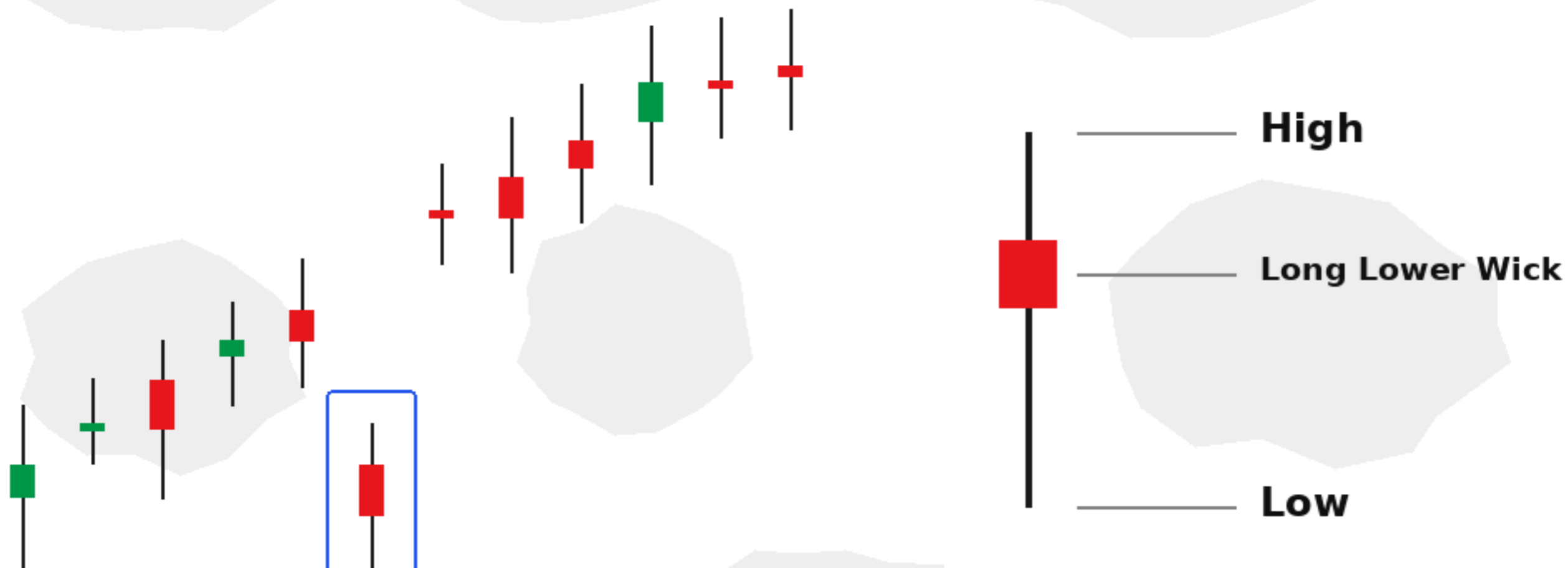
**Shooting Star
(Long upper wick)**

**Shooting Star near top
Possible Selling Pressure**

i Bearish reversal signal

Strike

Hanging Man Candlestick Pattern



**Hanging Man
(Long lower wick)**

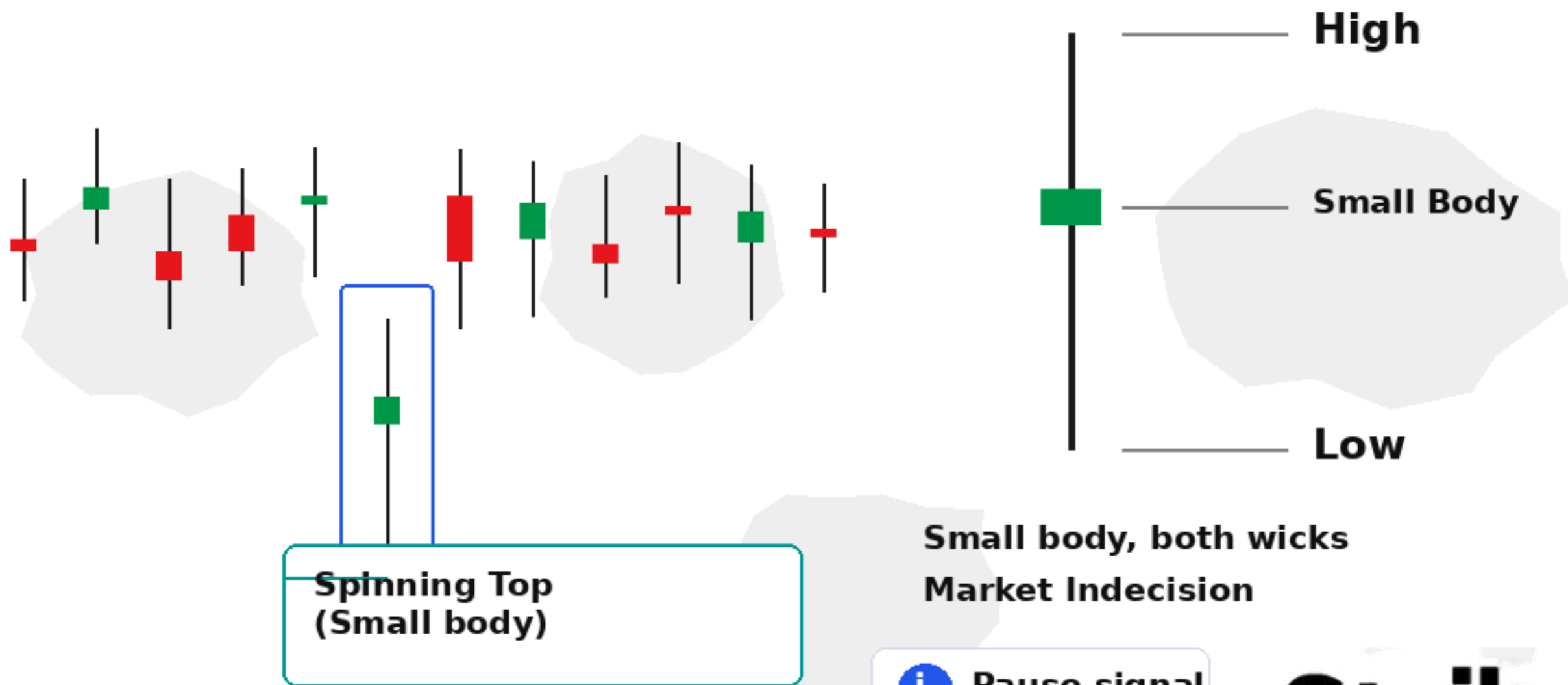
**Hanging Man after rally
Selling Pressure Warning**

i Confirm first



Past performance is not indicative of future results.
Trade responsibly.

Spinning Top Candlestick Pattern



Past performance is not indicative of future results.
Trade responsibly.

Strike

Marubozu Candlestick Pattern

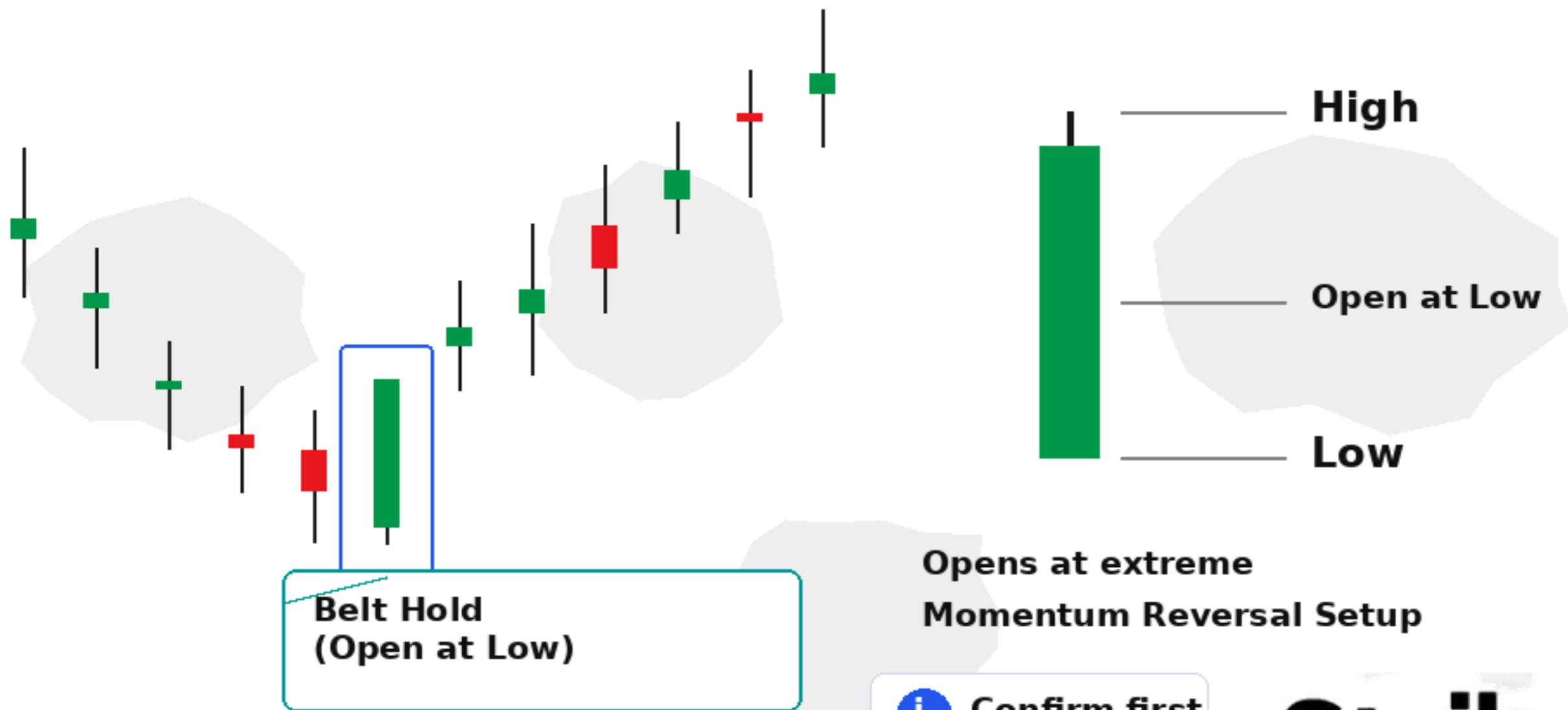


**Marubozu
(No wicks)**

**Strong full-body candle
Strong Momentum**

i Strong momentum

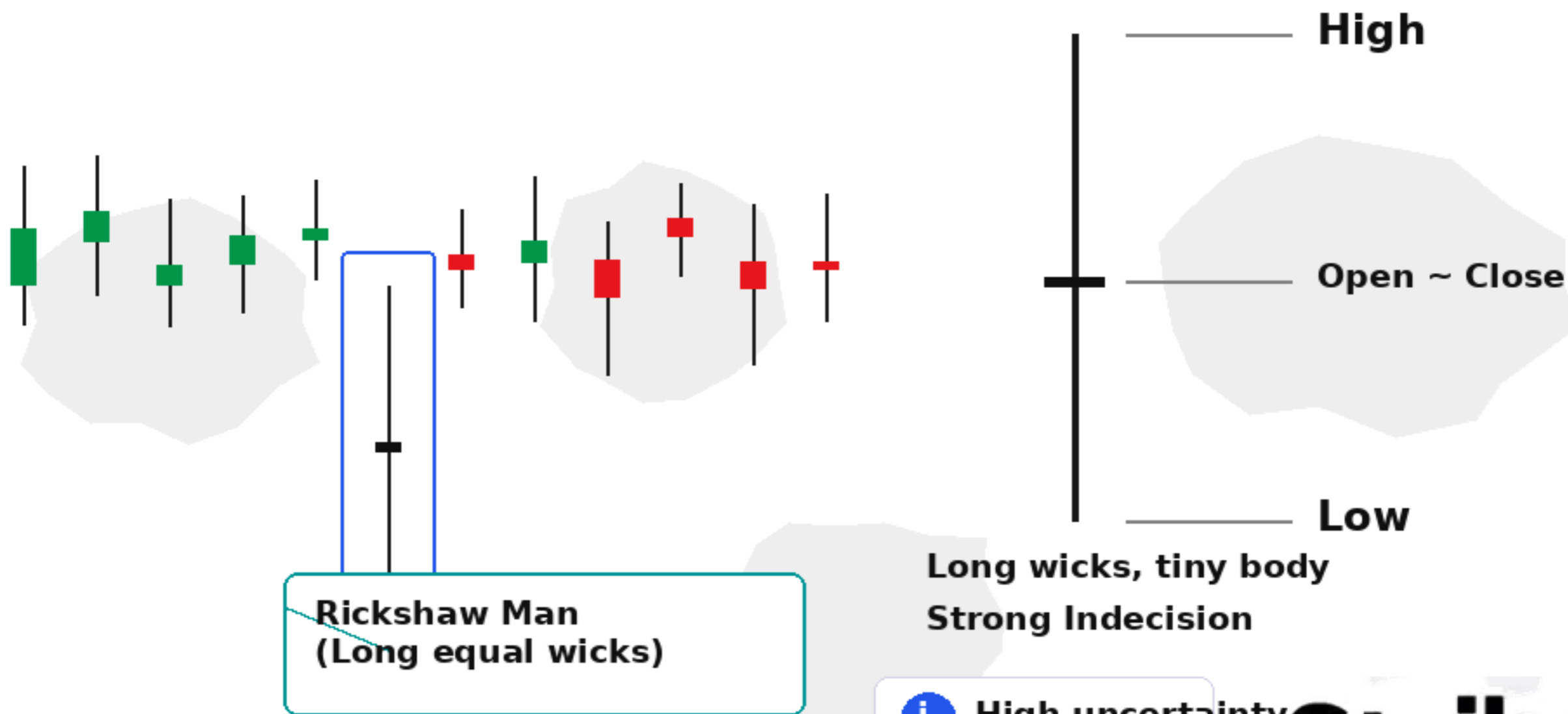
Belt Hold Candlestick Pattern



i Confirm first

Strike

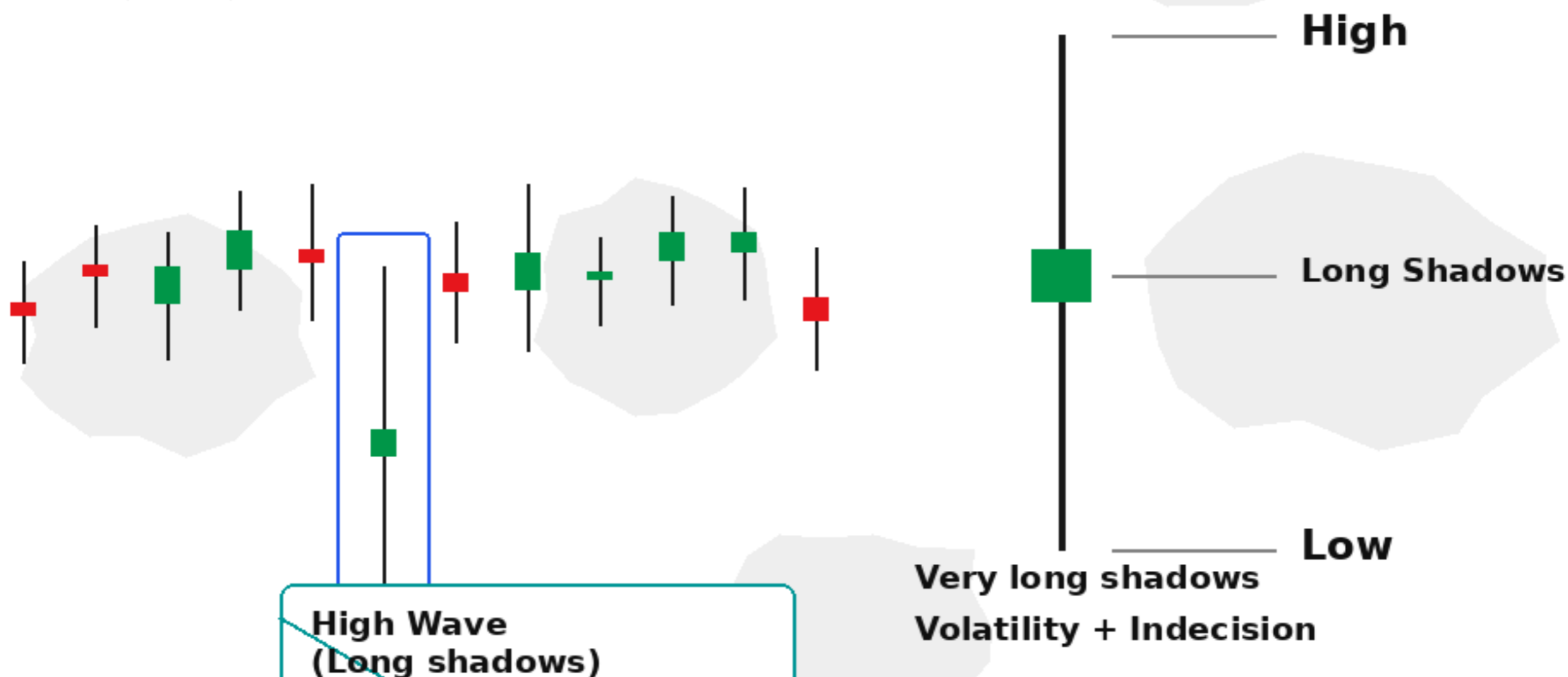
Rickshaw Man Candlestick Pattern



Past performance is not indicative of future results.
Trade responsibly.

Strike

High Wave Candle Candlestick Pattern

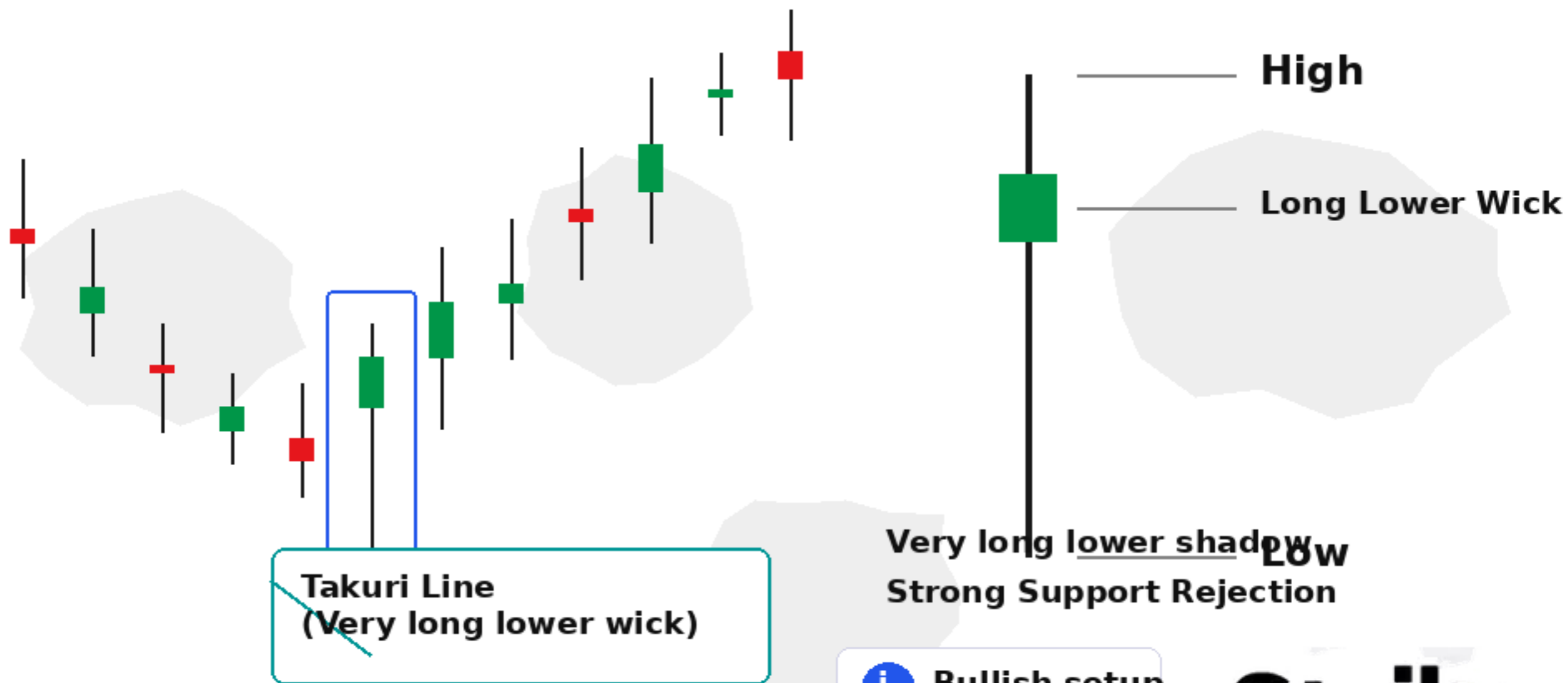


High Wave
(Long shadows)

i Volatile pause

Strike

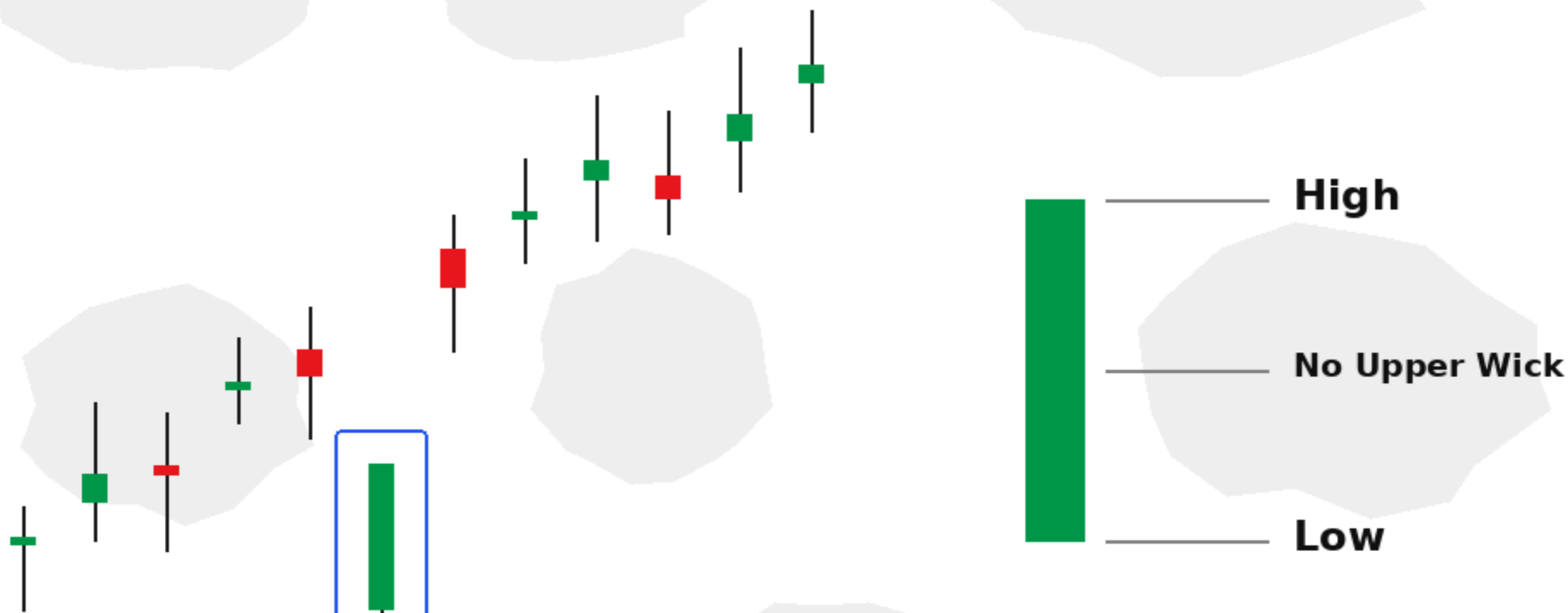
Takuri Line Candlestick Pattern



Past performance is not indicative of future results.
Trade responsibly.

Strike

Shaven Head Candlestick Pattern

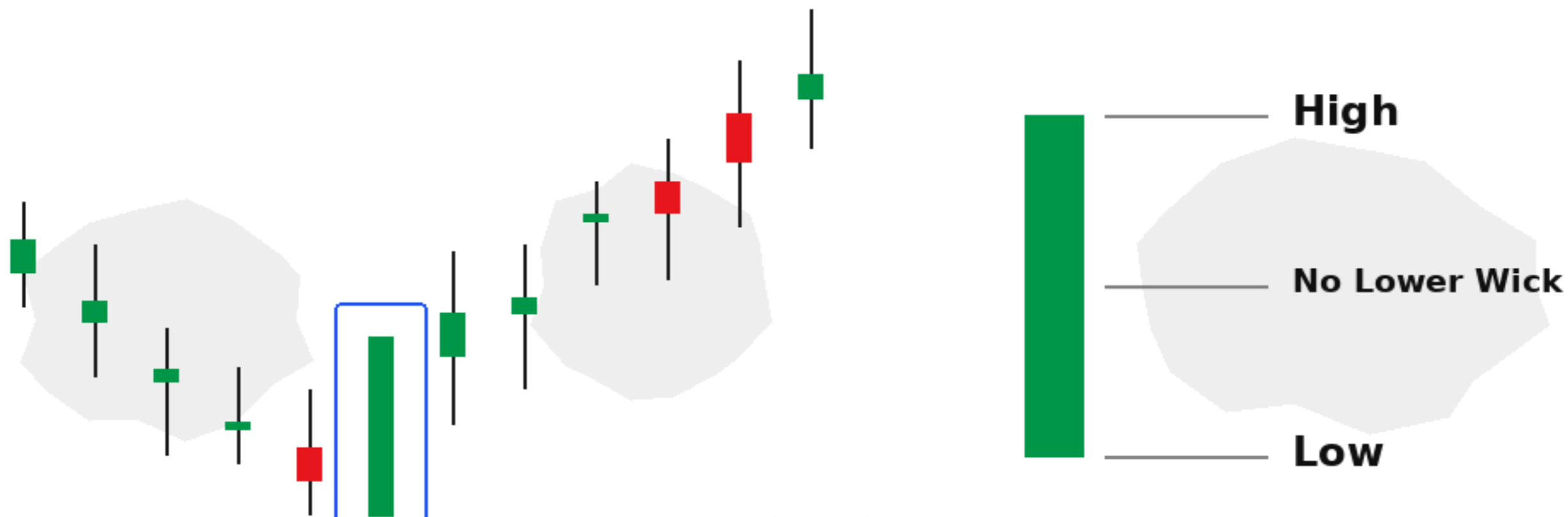


**Shaven Head
(No upper wick)**

**No upper shadow
Close at High**

i Strong close

Shaven Bottom Candlestick Pattern



**Shaven Bottom
(No lower wick)**

**No lower shadow
Open at Low**

i No lower wick

Strike